

USE AND MAINTENANCE MANUAL

SPRING TINE CULTIVATOR CR7



Power		Model	Weight		Tooth	Working depth		Working width	
HP	KW		KG	LBS		CM	INCH	CM	INCH
18-24	13-18	CR7	75	170	7	15	6	98	38,5

PREFACE

This manual is an integral part of the machine.

It must always accompany the machine and be kept within reach of the operator.

The enclosures mentioned are an integral part of this manual.

The purpose of this manual.

This manual gives information for the correct and safe use of the machine.

The owner must read this manual carefully before work with the machine.

Responsibility of the owner

The owner is responsible for accidents or damages caused to people or things due to negligence in following the instructions in this manual.

Assistance in using this manual

Explanations: contact the dealer.

Request for additional copies of the manual: in case of loss or wear and tear, or in case one wants the manual in a different language, the customer should ask the dealer or manufacturer.

Pay attention to the warning signals



<Danger>: indicates a situation that is potentially dangerous which, if not avoided, will cause death or serious damage.



<Warning>: indicates a situation that is potentially dangerous which, if not avoided, will cause death or serious damage.



<Caution>: indicates a situation that is potentially dangerous which, if not avoided, can cause minor to moderate damage or it indicates to be careful about an unsafe procedure.

<Important>: indicates instructions that must be followed precisely in order to avoid damage to the product, process or environment.

<Note>: indicates supplementary information.

DESCRIPTION

FUNCTION OF USE

The spring tine cultivator works on the ground without overturning it. It works at a certain depth and separates the surface crust from the deeper layer, so in this way it increases the capacity of moisture retention, aerates the ground and makes uprooting of grass. It is advantageously used in place of spring plowing especially for row crops .

The tools are connected to the frame by springs that allow the tool to rise up when it bump into the fixed obstacles, thereafter returns automatically into its working position.

The machine is connected to the tractor by a three-point hitch.

The frame and the third point are realized using high-strength steel.

PERFORMANCES:

Performance limits.

The plough must be applied to a proper HP tractor (See the table pg. 1).

Using out of limits.

Applying the plough to tractor exceeding the maximum HP, the high speed can damage the components of the cultivator.

Performances optimization.

Keep the moulboards clean and sharpened.

SAFETY INFORMATION

GENERAL REGULATIONS

In this section you find the potential hazards and precautions to limit the potential risks.

- Only work in daylight or with good artificial lighting
- Never use the tool near other persons, specially children and animals.
- Wear long pants and heavy shoes, never work barefoot or with sandal.
- Attention to the soil: make sure that there are not stones, sticks, iron wires, etc.
- Pay attention using the machine on slopes: proceed to the maximum slope and never work in slanting direction.
- Respect the speed limit.
- Check immediately the machine if it touches foreign objects.
- Change quickly defective parts.
- Stay away from sharp surfaces.
- Park the machine in a safe place to avoid someone hits the plowshares.

SAFETY RESTRICTIONS

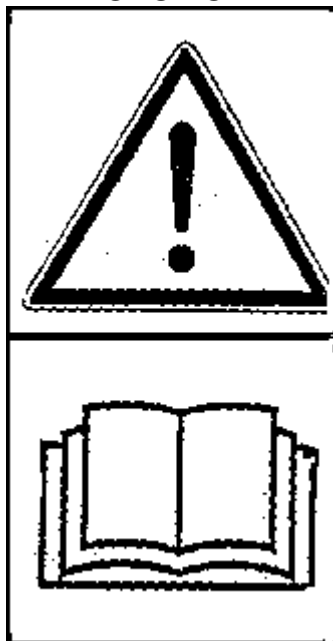
Children and people who are not familiar with these instructions must not be permitted to use the machine.

Local regulations can restrict the use of the machine in accordance to the age.

SAFETY SIGNS ON THE MACHINE

In this section, the safety signs on the machine are reproduced and explained.

CAUTION



1

1. Read Use and maintenance manual.

The safety signs on the machine must always be legible.

In case of damage, the labels of the signs must be substituted.

In the case of the substitution of machine parts that have safety signs, the signs must be replaced.

Supplying of new safety labels and the application procedure

Contact your dealer to receive new safety labels with instructions for application.

PROCEDURES AND GENERAL INSTRUCTIONS
--

Upon receipt of the machine.

Checks before work.

Attachment to the tractor.

Reaching the working area.

Setting work parameters.

Commissioning.

Start tractor with the lowered lifter.

End of Work.

At the end of work raise the lifter.

Cleaning after work.

Clean the machine with a jet of water to remove dirt and mud.

This operation is used to check for any damage, deformation of parts and not tightened bolts.

ORDINARY MAINTENANCE

This paragraph indicates the maintenance that does not require special technical skills and can be performed by each user.

Check the tightening of the screws.

Lubrication of the adjustment screws and mechanical joints.

Teeth maintenance.

Anti-rust protection at the end of the season.

Apply an anti-rust product, that is easy to remove, on unpainted metal parts.

PROCEDURES AND MAINTENANCE INSTRUCTIONS

Teeth maintenance.

Lubrication.

TRANSPORT

Outside of working operations, the machine is carried by the tractor in the raised position.

STORAGE

Store the machine in a dry place.



<WARNING>: Store the machine in a secluded place, protecting the cutting parts to prevent accidental collisions.

INFORMATION ON DEMOLITION



At the end of its working life, the machine must be sent to be demolished and that can only be done by an authorized authority, in accordance with the national laws in force for the environment. Therefore it is necessary to get information from the qualified local authorities on the procedure to follow. The machine is mainly composed of: iron materials and paints.

AUXILIARY SERVICES

Spare parts service.

Warranty service.

WARRANTY

The warranty is not applicable when:

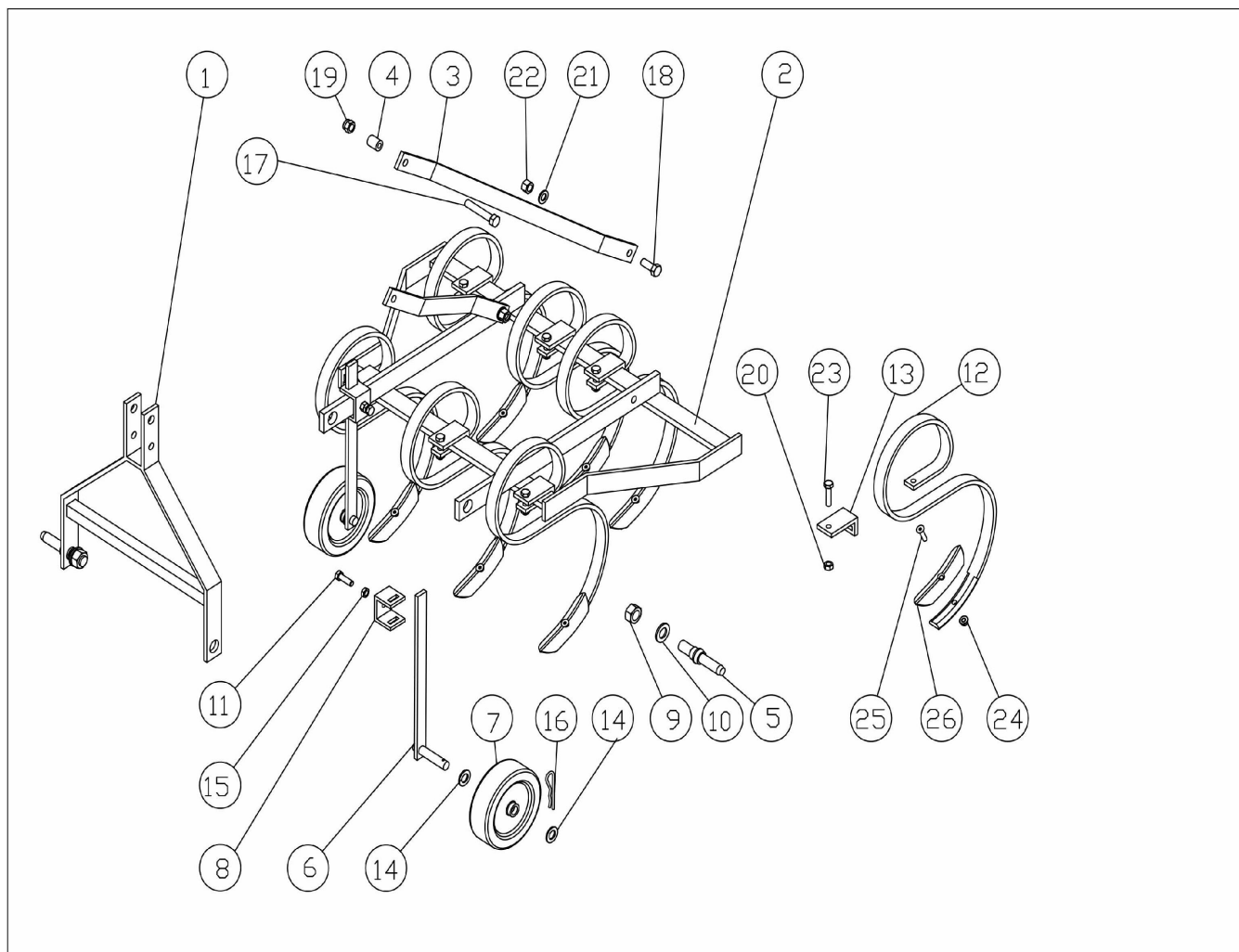
- The maintenance work has not been done correctly.
- The machine has been used out of its own service.
- The machine has been transformed or modified without the manufacturer's written authorization.

WORK AND MAINTENANCE SHEET

Every user should register on this sheet the facts about the life of the machine (both work and maintenance), so as to attest its conditions.

DATE	WORKING HOURS	MAINTENACE	NOTE	USER

SPARE PARTS CR7



SPARE PARTS LIST CR7

Pos.	DESCRIPTION	COD.	Q.ty
1	ATTACHMENT	CR001D	1
2	FRAME	CR002D	1
3	TIE ROD	CR003D	2
4	BUSH	CR004D	1
5	HITCH PIN I° CAT.	SRM220D	2
6	WHEEL BRACKET	CR005D	2
7	LITTLE WHEEL	000002VD	2
8	CLAMP FOR WHEEL BRACKET	CR006D	2
9	NUT M24 P.F.UNI 5588	40200054	2
10	GROWER Ø 24 UNI 1751	40300019	2
11	SCREW M12x40 UNI 5739	40100023	2
12	SPRING FLEX	CR007D	7
13	CLAMP WITH SPRING FLEX	CR008D	7
14	WASHER Ø 20 UNI 6592	40300007	4
15	NUT M12 UNI 5589	40200053	2
16	SPLIT PIN R Ø 5	41400002	2
17	SCREW M16x100 UNI 5737	40100131	1
18	SCREW M16x40 UNI 5739	40100034	2
19	NUT M16 DIN 982 SELFLOCKING	40200039	1
20	NUT M12 UNI 5588	40200012	7
21	GROWER Ø 12 UNI 1751	40300005	2
22	NUT M16 UNI 5587	40200015	2
23	SCREW M12x50 UNI 5737	40100102	7
24	NUT M10 DIN 6923	40200178	7
25	SCREW UNI 5933 M10X30 ZN	40100149	7
26	CLAMP WITH SPRING FLEX	CR009D	7
27			
28			
29			
30			
31			
32			
33			
34			
35			

INDEX

DESCRIPTION.....	3
FUNCTION OF USE.....	3
PERFORMANCES:	3
SAFETY INFORMATION.....	4
SAFETY SIGNS ON THE MACHINE	5
PROCEDURES AND GENERAL INSTRUCTIONS	6
APPLY AN ANTI-RUST PRODUCT, THAT IS EASY TO REMOVE, ON UNPAINTED METAL PARTS.	7
PROCEDURES AND MAINTENANCE INSTRUCTIONS	7
STORAGE.....	8
AUXILIARY SERVICES.....	8
WARRANTY	8
WORK AND MAINTENANCE SHEET	9
SPARE PARTS CR7	10
SPARE PARTS LIST CR7.....	11