

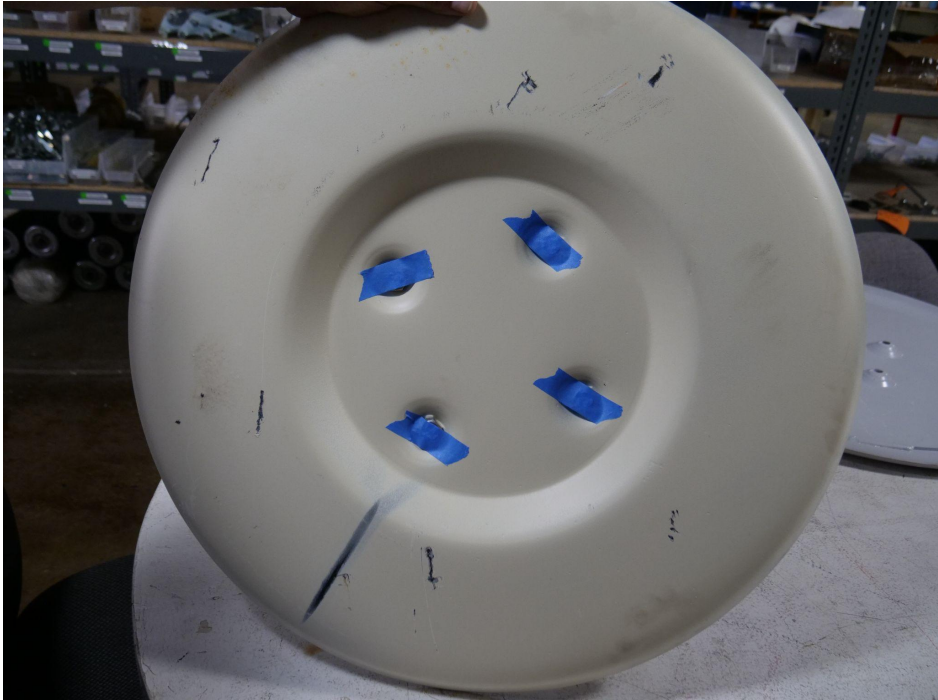
INSTALLATION GUIDE



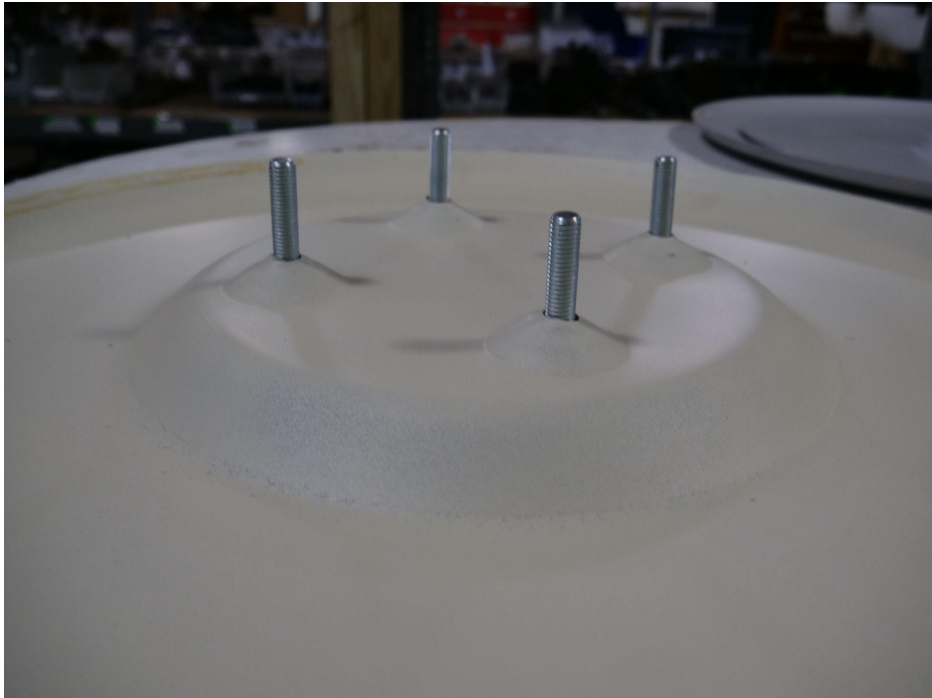
TM67C Drum Mower Lift Kit

- Safely lift or place the mower in a position where you can access the bottom skid plates and prepare for removal and installation.
- Inspect the factory skid plates for any damage that may impede safe installation and operation.
- Remove the four (4) bolts located on the bottom of the existing skid plate. The skid plate is heavy, so be careful and have preventative measures in place for the supporting of the skid plate as it is being removed and separated from the drum unit.
- Once the factory skid plate has been removed, install the provided washers onto the new longer bolts and place them in through the bottom of the new skid plate and use tape to hold them in place (Fig.1). This will make the installation hassle free in the next steps. Then place the skid plate on the ground as it would be sitting on the ground during use, with the bolt threads facing up (Fig.2).

INSTALLATION GUIDE



(Fig.1)



(Fig.2)

INSTALLATION GUIDE

- Now line up the holes with the bolts and place the factory/old skid plate on top of the new skid plate, where the bolts go through the factory holes and the old plate will be resting on top of the new plate.
- Apply the provided medium strength thread locker to the threads on each bolt (Fig.4).



Fig.4

- Pick up the assembly and line the bolts up with the holes on the drum unit. Remove the tape and install each bolt one at a time. This step is best done with a helper to help support the weight of the plates. Make sure that each bolt is secured tightly.
- Place the mower back on the ground and the installation of the lift kit has been successfully completed.