

QUICK START GUIDE



3-PIN QUICK ATTACH

QUICK START GUIDE

Congratulations on your purchase of the Ai2 3-Pin Quick Attach! Ready to get started? Let's get right to it.

INSTALLATION

Installation varies slightly depending on tractor model. We've grouped them into 3 "generations," so find your tractor model in the list below to determine which generation your tractor is. Throughout this guide we identify steps specific to each generation with the shorthand GEN 1, GEN 2, and GEN 3. If no generation is listed, the step applies to all models.

GEN 1	BX1500, BX1800, BX1830, BX22, BX2200, BX2230, BX23
GEN 2	BX1850, BX1860, BX1870, BX1870-1, BX2350, BX2360, BX2370, BX2370-1, BX24, BX25, BX25D, BX25D-1, BX2660, BX2670, BX2670-1
GEN 3	BX1880, BX2380, BX23S, BX2680

QUICK START GUIDE

PACKAGE CONTENTS

ALL MODELS	<ul style="list-style-type: none">• 1x Quick Attach Body• 2x P-Pin• 2x D-Clip• 1x Cylinder Pin• 3x Pin Retaining Bolts & Nuts
GEN 1 & 2 ONLY	<ul style="list-style-type: none">• 2x Straight Loader Arm Pin• Spacers (optional)
GEN 3 ONLY	<ul style="list-style-type: none">• 2x Machined Loader Arm Pin• 2x Stand Release Foot Bolt (with 1 5/8" wide head)• 4x Stand Release Foot Jam Nut• 2x Stand Release Foot Washer• 2x SAE Washer (1/2")• 2x Cotter Pin• 6x Zip Tie

Because we provide hardware for all generations, you will have extra parts. Keep them on hand in case you decide to switch tractors in the future!

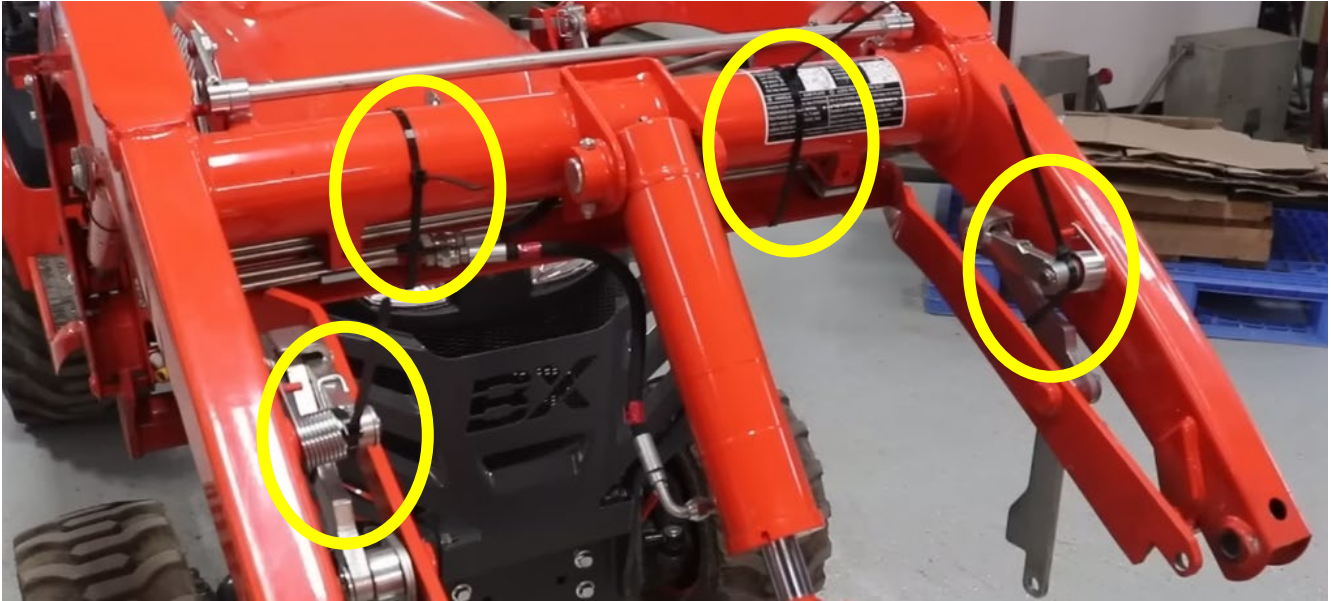
REQUIRED TOOLS

- 2x Wrench - 7/16"
- 2x Wrench - 1/2"
- Hammer
- Punch
- Pliers
- Snap Ring Pliers (Needle Nose Pliers or Flathead Screwdriver will do)
- 2x Wrench - 12mm (GEN 3)
- 1x Wrench - 3/8" (GEN 3)
- 1x Wrench - 9/16" (GEN 3)

QUICK START GUIDE

INSTALLATION STEPS

1. GEN 3: Secure the kickstand to the loader frame using the included zip ties. Chain two zip ties together to make the required length for the top positions.



2. Lower the bucket all the way to the ground.
3. GEN 3: Remove 12mm nuts & bolts (reused later) from sides of loader arm mounts.



4. GEN 1: Remove cotter pins (reused later) from outside of loader arm pins.

QUICK START GUIDE

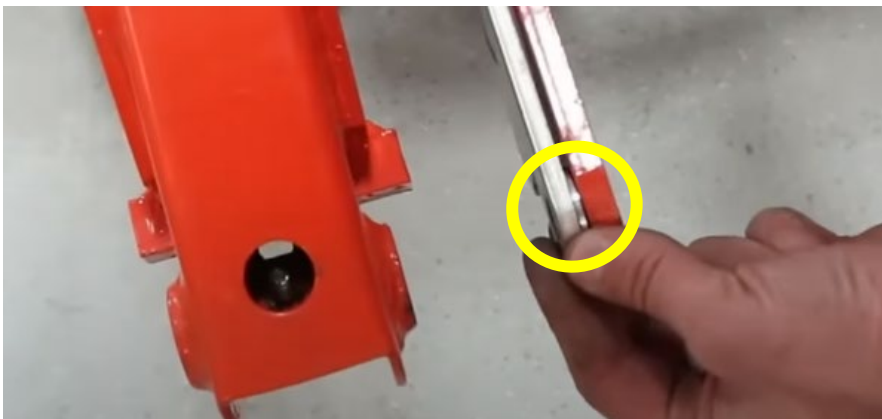
5. GEN 2: Remove retaining bolts & nuts (reused later) from outside of loader arm pins.
6. GEN 3: Remove snap rings (not reused) from factory loader arm pins. Snap ring pliers help, but you can also use needle nose pliers to pry them off.



7. Remove cotter pin (GEN 1) or retaining bolt (GEN 2 & 3) from center cylinder pin.
8. Remove all 3 pins from bucket.



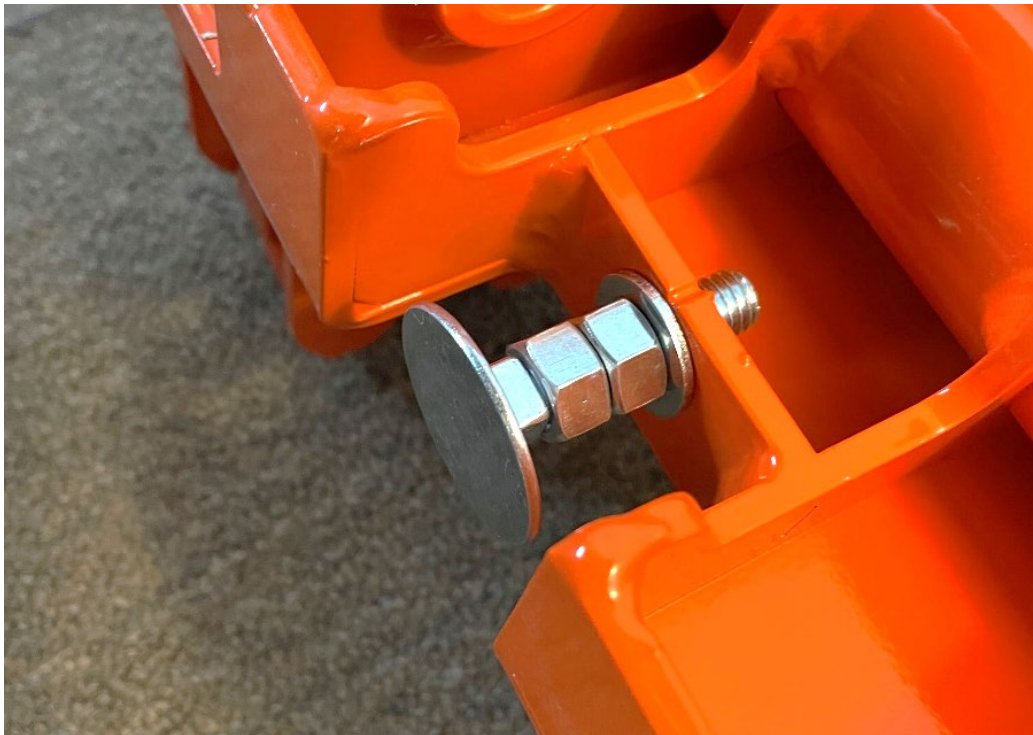
NOTE: On GEN 3 tractors there is a spacer washer on the pin. Note its location and be sure not to lose it as it will go back in the same place.



9. Clean old grease off of pins and mounting holes.

QUICK START GUIDE

10. GEN 1 & 2: Install all old pins back in bucket using old hardware.
11. GEN 3: Install old side pins in bucket using old hardware and the new cylinder pin using its retaining bolt (GEN 3 loaders have a cylinder pin with a grease fitting, and this should go back on the loader).
12. GEN 3: Install stand release foot bolt along with corresponding hardware as shown in the picture below. Thread all the way in until finger tight.



13. Raise the loader so that ends of loader arms are waist high.
14. Retrieve corresponding loader arm and cylinder pins and apply a light coat of grease.

QUICK START GUIDE

15. Place the pins within reach. Install the 3-Pin Quick Attach onto the loader using the two loader arm pins first.



16. GEN 1: Use the included spacer washers if necessary to take up any excess space on the sides of the loader arms (generation 1 tractors have narrower loader arm ends).
17. GEN 3: Be sure to insert the spacer washer mentioned in step 8 in the appropriate location. Install a 1/2" washer (the larger of the two) and cotter pin on the inside ends of each loader arm pin, where the snap ring used to be (don't forget to bend the cotter pin).
18. Install retaining bolts & thin lock nuts for loader arm pins and hand tighten.
19. Apply a light coat of grease to the unpainted surface of the center cylinder pin bushings. Insert the old cylinder pin and install the retaining bolt & thin lock nut.
20. Tighten all retaining bolt nuts (9/16" & 1/2" wrenches).

QUICK START GUIDE

21. GEN 3: Raise the boom of the loader so that the quick attach is above your head. Use the bucket tilt function to rotate the quick attach downward so that it is facing the ground.



Unthread the stand release foot bolt (3/8" wrench) until it contacts the stand release foot and then unthread an additional turn.



QUICK START GUIDE

22. Tighten the first jam nut against the washer (9/16" wrench) and then tighten the second against the first.

QUICK START GUIDE

QUICK ATTACH HOOKUP

1. Place the P-Pins & D-Clips in the "parking spots" as shown below.



2. Approach the attachment with the loader height set so that the quick attach center hook is below the height of the attachment's center pin.

i *NOTE: Visibility of the quick attach will be limited from the operator's seat. The first few times you do this you may need to stand periodically to get an idea of how things are positioned, or have a helper guide you.*

3. When the quick attach center hook is lined up with the center pin on the attachment, raise the loader boom and raise the attachment slightly, then curl the bucket tilt control upward until the attachment mounts securely.

QUICK START GUIDE



NOTE: The side mounts on Gen 1 buckets are narrower and it is a tight fit. You may need to physically push these attachments from the front to get them to seat fully into the side pin slots.

4. Install the P-Pins and D-Clips.